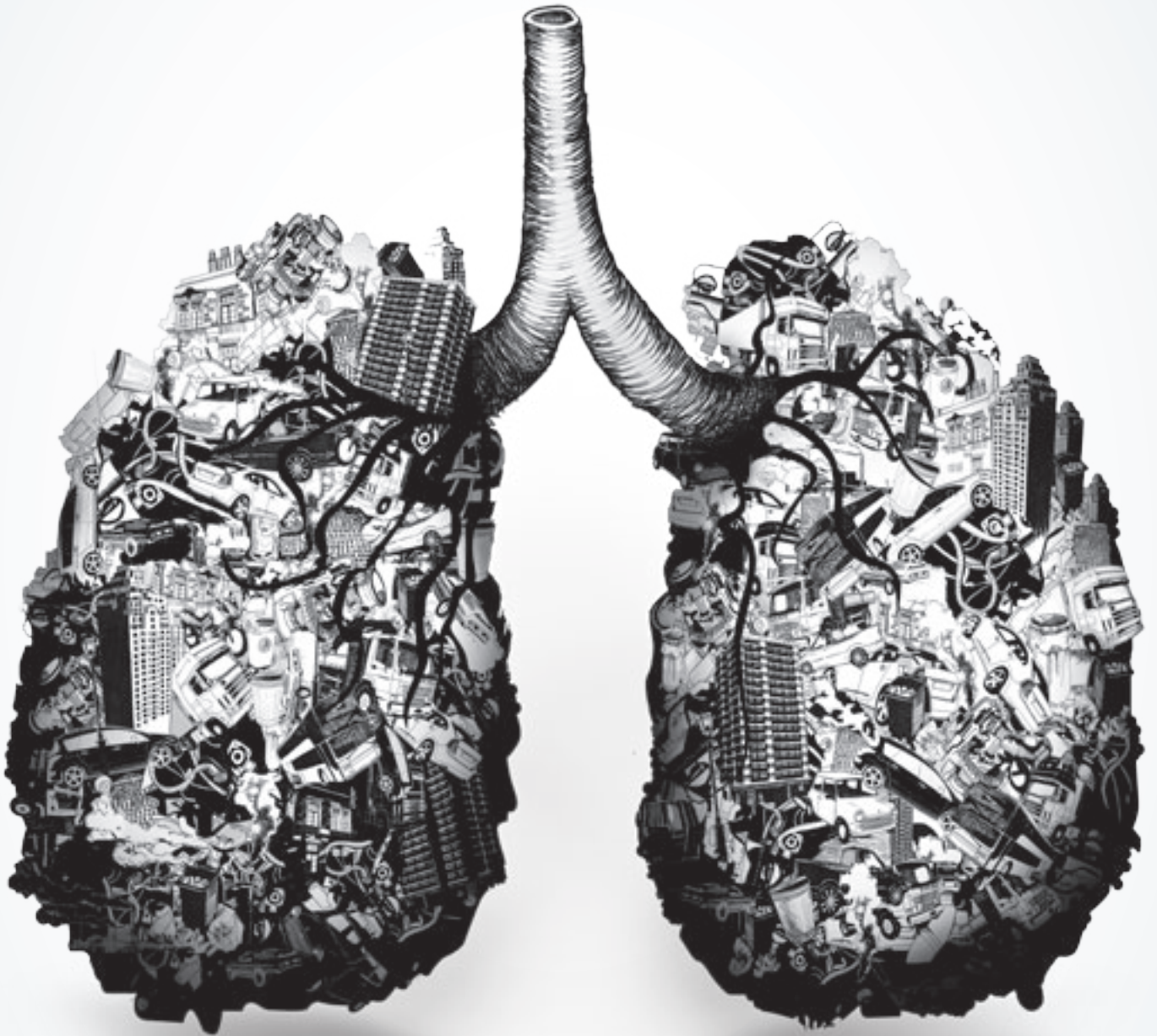


# City-Flo XL

Keeps the city out



 **camfil**  
**F FARR**  
CLEAN AIR SOLUTIONS

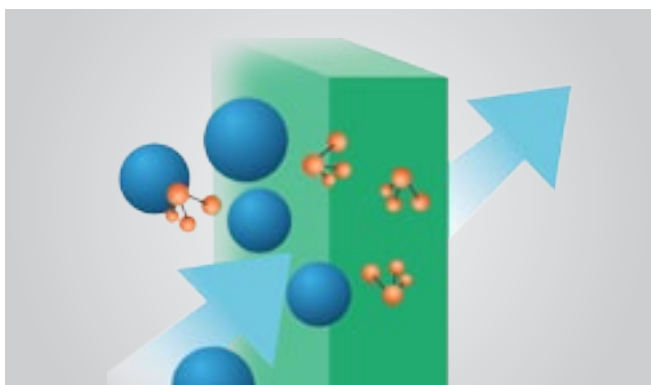


# Keep the city out

## **A completely new combination filter**

Our new air filter, City-Flo XL, is a combination filter that cleans air of both particles and molecules. Because the filter contains activated carbon, it also removes odours and aromas that ordinary air filters miss. The filter has been specially developed for buildings in urban environments and is extraordinarily effective against exhaust fumes and smells.

Along streets and roads that have heavy traffic, City-Flo XL is ideal for use in office complexes, shopping centres, schools and other public buildings. The pressure drop across Camfil Farr's totally unique carbon-filled fibreglass media is uncommonly low.



Unique filter media with F7 particle separation and, for molecular filtration, activated carbon

This saves both energy and money. The highly activated carbon removes a wide range of volatile organic contaminants. Furthermore, the filter also cleans air of ozone, a problematic gas that is common in urban environments.

## **Stricter European requirements**

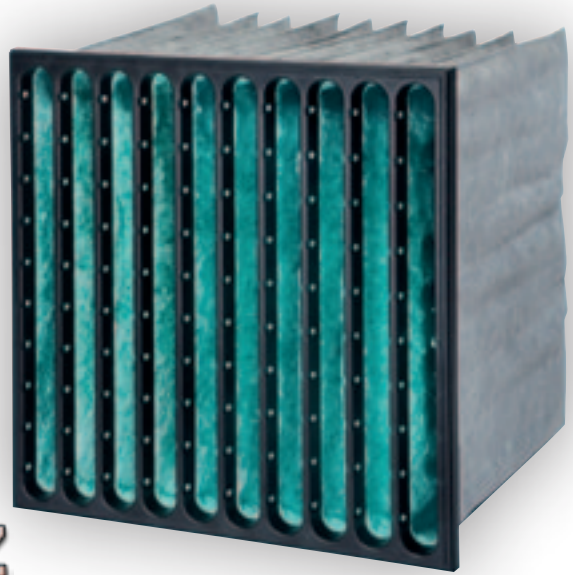
Poor air is increasingly a problem in our cities. The exhaust fumes, diesel particulates and ozone generated by increased vehicle traffic considerably lower air quality. Sulphur dioxide, nitrogen oxide and other air contaminants are creating serious health problems. At the same time, European requirements are becoming stricter. City-Flo XL has been developed to achieve a better indoor environment that satisfies EN13779:2007, the new European standard for indoor air quality. City-Flo XL is also Eurovent certified and P marked.

## **Easy to install**

City-Flo XL has the same plastic frame (a single-piece casting) used in many of our other filters. This makes things extremely easy if you are already using Camfil Farr products. When you upgrade or add to your existing filters, there is no need to replace your filter system. With our new combination filter, you simply replace both the bag filter and the carbon filter.

## CITY-FLO XL

- Combined particle and molecular filter
- Low initial pressure drop
- New bag design (conical)
- Stable, aerodynamically shaped front frame (single-piece casting in plastic)
- Ozone rating 3 (cleans an average of 35% of ozone from the air)



Filter area m <sup>2</sup>	Nominal flow (m <sup>3</sup> /h)/ Pressure drop (Pa)	Dimensions	No. of bags
6.1	3,400/110	592x592x520	10
7.5	3,400/85	592x592x640	10

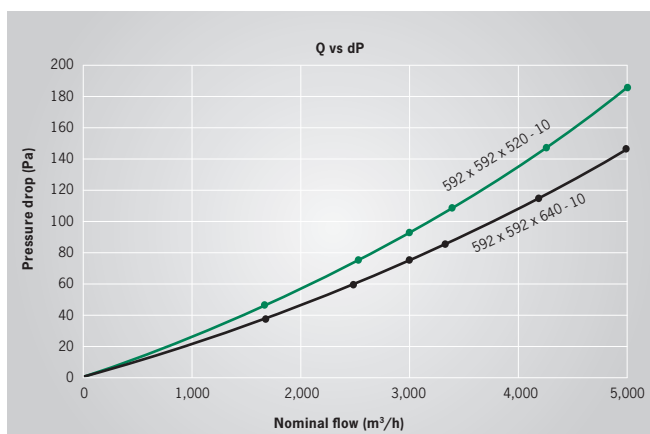
Can also be ordered as:

Dimensions	No. of bags
490x592	8
287x592	5
287x287	5
592x287	10
592x490	10
490x490	8

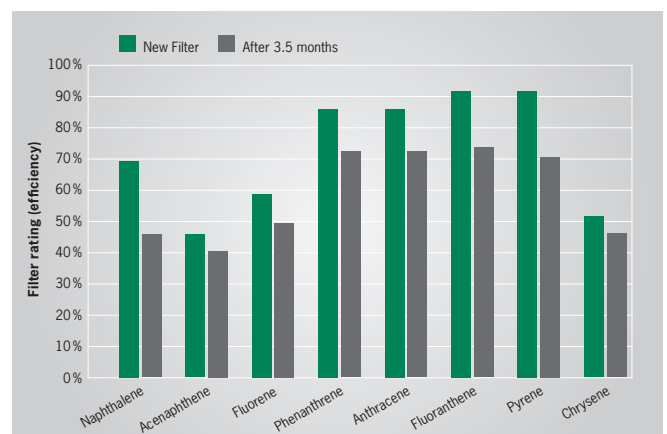
### TECHNICAL SPECIFICATIONS

Filter type: Particle and molecular filter
Frame: Plastic, single-piece casting
Filter media: Fibreglass and highly activated carbon
Filter class: F7 (as per EN779:2002)
Atmospheric humidity: Max. 70% (RH)

### PRESSURE DROP



### EFFICIENCY AGAINST GASEOUS PAHs



Test conducted in winter (outdoor air, ordinary ventilation plants in Stockholm).



## City-Flo XL in practice – Bergen

The Norwegian city of Bergen is particularly prone to air pollution. In really cold winters, a “lid” forms over the city. This is due to the phenomenon of temperature inversion – air “high” above the city is warmer than the “central air” and, as a result, pollutants cannot rise and disperse in the upper atmosphere. In the winter of 2009/2010, when contaminant levels were at their worst, Bergen was the most polluted city in Europe.

### City with Europe’s worst pollution

Bergen’s poor air quality is increasingly a health concern. Especially for asthma sufferers and those with lung complaints, exposure to sulphur dioxide, nitrogen oxides and other air contaminants has a dramatic impact on health. If they are not effectively removed by an air filter, these pollutants in the outdoor air can easily enter houses and buildings.

### Striding ahead in Norway

Poor air quality is a constant topic of debate in Norway’s media. For the ventilation industry, the situation in Bergen sets a reference point and a switch to City-Flo XL is now being considered for all large Norwegian towns. City-Flo XL removes particles, smells, gases (sulphur dioxide, nitrogen dioxide and ozone included therein), volatile organic substances and polycyclic aromatic hydrocarbons (PAHs). When City-Flo XL is installed, the building’s users are guaranteed indoor air of a high quality (as per European standard EN 13779). A number of reports have confirmed the benefits. Bergen’s fire brigade provides one example. Since installing City-Flo XL, the brigade has noticed a great difference in air quality. The brigade’s building has a total of fourteen air-supply plants. Initially, City-Flo XL was installed in three of these. However, with the marked improvement in indoor air quality, the fire brigade has now ordered filters for the remaining eleven units.